

# ChapeltonNews

## Inside:

House builders on-site

New technology lights up Chapelton

Chapelton opens its doors

Meet the team



Above: [Model of Cairnhill](#)

## Introduction

by [Earl of Southesk](#)

Welcome to the spring issue of ChapeltonNews. With all three housebuilders opening sales centres on-site in a few weeks we're entering one of the most exciting phases of the development and we are eager to see the foundations of the first Chapelton homes being laid.

The provision of infrastructure is still underway and despite the wet winter work is on target to allow the builders to start. The entry road roundabout at the Newtonhill junction is near completion and the roads and pipes within the site are continuing apace. We would like to thank all local residents for their forbearance during the work.

In this issue we'll introduce some of the innovative technology being implemented. Chapelton is the first large development in

Scotland to secure 'fibre broadband to home', meaning it is ready for next generation technologies for home and business.

An award winning street lighting system will also be installed across the town, reducing carbon emissions by 20 per cent.

Residents will be able to enjoy the best of both worlds. Chapelton offers inhabitants the connectivity of the modern world together with plentiful green space and uninterrupted views of the countryside and the Aberdeenshire coast.

At the end of May you are welcome to come along and meet the team at Union Square in Aberdeen where there will be an opportunity to see the newly completed model of the development, to view our film and ask any questions you might have.

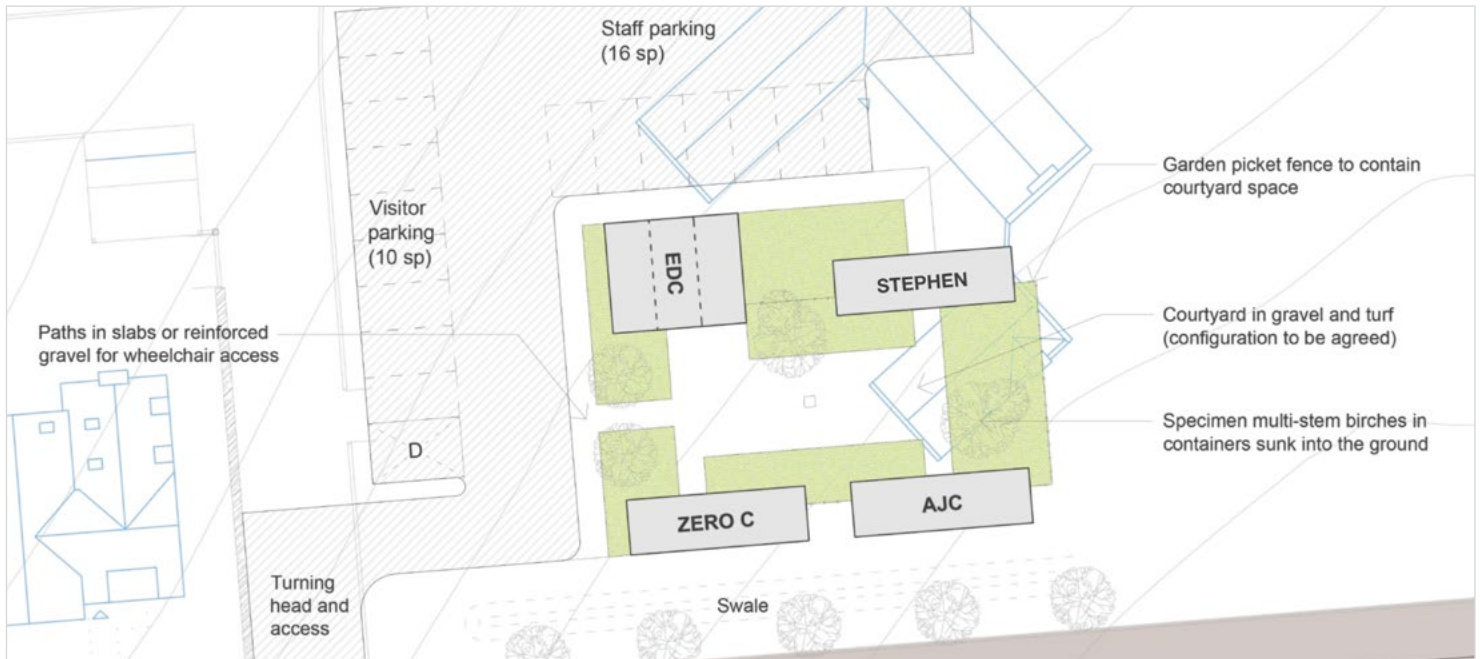
In late May/early June, we'll be throwing open the doors of our sales cabins at the site, so that all those who are interested in the development can come and learn why buying a home at Chapelton is a sound investment, whilst enjoying a cup of tea in the Visitor Centre. They will also be able to meet the housebuilders and peruse the different house-types on offer.

Finally, we introduce Norrie Kitson, Associate Director at leading global project management and construction consultancy, Turner & Townsend. The team at Turner & Townsend has developed the strategy for the infrastructure construction phase in close collaboration with the housebuilders and utility providers.

We very much hope you will enjoy reading ChapeltonNews.



# House builders on-site



The temporary cabins have now arrived onsite and are being fitted out with all that is needed to welcome visitors. EDC and the three house builders will remain in the one area until their showhomes and a permanent tearoom and visitor centre are built. It will mean that visitors can easily park and access all of the partners involved in the project.

The visitor centre will feature Teacake, run by Anita Collin, so anyone wanting to view designs, make decisions or just wanting to have a comfortable view of the site can come and enjoy her baking. The model will be on display in the centre of the tearoom.

## New Developments at Chapelton

With the town beginning to take shape, exciting new developments that will help deliver a truly sustainable, modern community are underway.

### Broadband Speeds 20 X UK Average

Chapelton will be the country's best connected town thanks to an agreement between Elswick Development Company and BT's infrastructure arm Openreach. The ultra-fast-fibre-to-the-premises (FTTP) will allow homes and businesses to enjoy maximum download speeds of 330Mbps - that's more than 20-times Ofcom's current UK average speed of 14.7Mbps.

The Openreach network is open access, allowing any communication provider to deliver services to customers and giving residents the opportunity to choose the package that is right for them based on price, brand and more.

For further information on Openreach's fibre broadband programme visit [www.superfast-openreach.co.uk](http://www.superfast-openreach.co.uk)

### Advanced Lighting

Chapelton will be the first location in Aberdeenshire to have this world-leading and innovative street lighting technology installed. The award-winning LeafNut system is wirelessly controlled and will allow individual street lights across the town to be remotely monitored, reducing carbon emissions by 20 per cent.

This advanced technology will dynamically control lighting levels at different times during the day and night, as well as record failures enabling prompt maintenance.

Towns and cities around the globe, including those in Australia, North America and Europe, are already seeing significant savings on energy costs and carbon emissions with the system. In January 2014, Transport for London began to install LeafNut across 35,000 of their 52,000 street lights as part of a new energy efficiency programme.

To learn more about LeafNut lighting technology visit [www.leafnut.com](http://www.leafnut.com)

# The Chapelton House Type Launch



Above: Model of Cairnhill

Elsick Development Company will be inviting you to our launch events in association with the town's three house building firms - AJC Homes, Stephen and ZeroC Holdings.

These three well-respected companies are responsible for delivering a range of house types for the first stage of the town which will include 256 homes.

These events will allow visitors to find out more about the different houses planned for the town, the house builders and Chapelton itself and to reserve a property.

For more information email [info@chapelton-online.co.uk](mailto:info@chapelton-online.co.uk) or stay tuned to our Facebook page for the latest updates.

- **Chapelton Model on display**  
*30th May, 9am - 7pm  
Union Square, Aberdeen*
- **Chapelton Visitor Centre Opens**  
*31st May/ 1st June, 11am - 5pm  
Cairnhill on Greenlaw Road*

## Having your say

You can find the latest news and share your views on Chapelton via our Facebook page and website:

[www.chapelton-online.co.uk](http://www.chapelton-online.co.uk)



[www.facebook.com/chapeltonofelsick](https://www.facebook.com/chapeltonofelsick)

In the meantime if you have questions you would like us to answer, please get in touch at [info@chapelton-online.co.uk](mailto:info@chapelton-online.co.uk). We will respond directly and print some of the answers in upcoming issues. People and their views are at the heart of the community.

# Meet the team

## Norrie Kitson – Turner & Townsend Project Management



Turner & Townsend is a leading global programme management and construction consultancy. The company has a strong track record in delivering the UK's infrastructure programmes.

As Associate Director at Turner & Townsend (T&T), Norrie Kitson was appointed in 2012 to lead project management aspects by assisting Elswick Development Company (EDC) and Turnberry Consulting with the implementation stages of the infrastructure works, in advance of the house building phase starting, and to provide support in respect of land agreements being reached with the house builders.

### How did you arrive in your current role?

Turner & Townsend worked alongside Turnberry on a major infrastructure project in Inverness and I also had previous experience of two similar developments. We were excited about getting involved in such a prestigious project, but recognised the challenges involved.

### Describe your typical day at work

Days can vary dramatically, but a typical day involves a mix of meetings with different personnel involved in the Chapelton project such as EDC, planning and design consultants, contractors, legal teams or statutory authorities. In addition to regular desk and computer work, I also attend site regularly.

### What skills does your role require?

Our principal role is to help our clients control and deliver quality, cost and programme. As Project Managers we typically get involved in some key decision making, but then go on to work with consultant and construction teams to enable these to be implemented.

We need to have the ability and motivation to understand and communicate these overall objectives to others, whilst recognising the implications of emerging solutions. Our role also requires a wide appreciation of all aspects required to successfully deliver the project.

### What project are you most proud of?

I would say my work at Adamson Hospital in Fife (Adamson Hospital and Primary Care redevelopment) has been very rewarding particularly given my involvement right from the start through to seeing patients move in and benefit from the new facilities.

### What does working with EDC on Chapelton mean to you?

It means a lot to be involved in such an exciting and prestigious project, particularly at a relatively early stage. Our appointment was at the beginning of design development and we are now seeing the works emerging on site.

### What do you think makes a good team?

Ability, experience, flexibility and commitment. Projects such as Chapelton typically demand more than a standard day's input.

### How would you describe Chapelton in three words?

Unique, visionary and challenging.

### How do you relax?

Having three young kids, I don't have a lot of relaxation time, but I enjoy outdoor pursuits like walking, cycling and even the occasional spot of rough camping. I also support St Johnstone and Scotland football clubs - if you can call that relaxation!

## Next issue:

- Opening event
- Progress on site
- Janet and Laura at Benton Scott-Simmons Landscape

Elsick Development Company  
Newhall  
Newtonhill  
Kincardineshire  
AB39 3SH

T: 01569 731310  
E: [info@chapelton-online.co.uk](mailto:info@chapelton-online.co.uk)  
W: [www.chapelton-online.co.uk](http://www.chapelton-online.co.uk)

